

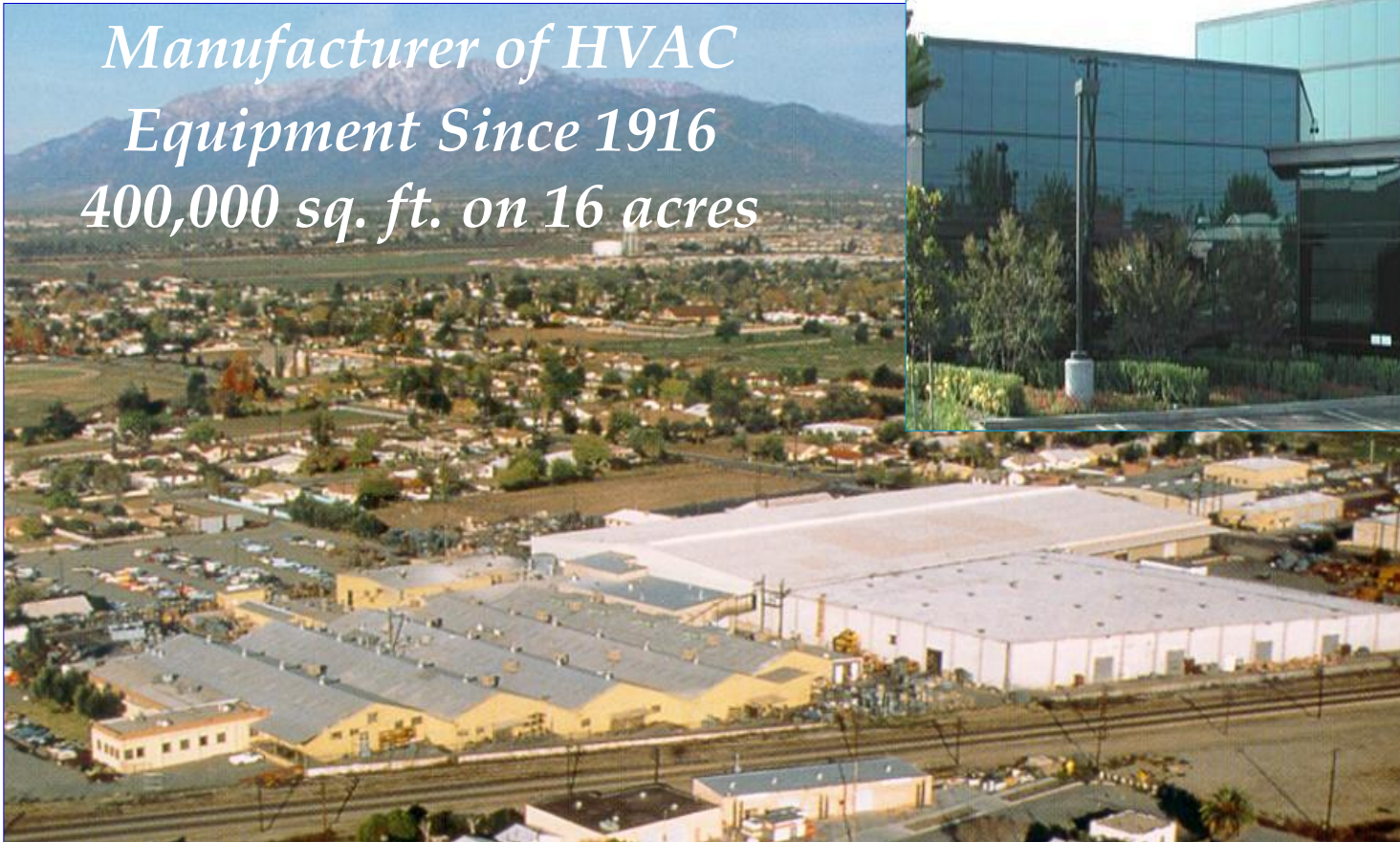
The logo features a stylized graphic on the left consisting of two curved, overlapping shapes. The top shape is red and the bottom shape is blue, both pointing towards the right. To the right of this graphic, the word "WILLIAMS" is written in a bold, black, sans-serif typeface.

WILLIAMS



Colton, California USA

*Manufacturer of HVAC
Equipment Since 1916
400,000 sq. ft. on 16 acres*





Visual factory “Vertically integrated” manufacturing





**BELT-DRIVEN AIR
HANDLERS
800 – 12,000 CFM**

**Horizontal (AH)
Vertical (AV)**

Basic (B)
Deluxe (D)



Draw-through design
Up to ten-row coil





**BELT-DRIVEN AIR
HANDLERS
800 – 12,000 CFM**

**Horizontal (AH)
Vertical (AV)**



**Double-Wall Perforated (P)
Double-Wall Solid (S)**

Horizontal/Deluxe/Perforated - Shown



**BELT-DRIVEN AIR
HANDLERS
800 – 12,000 CFM**

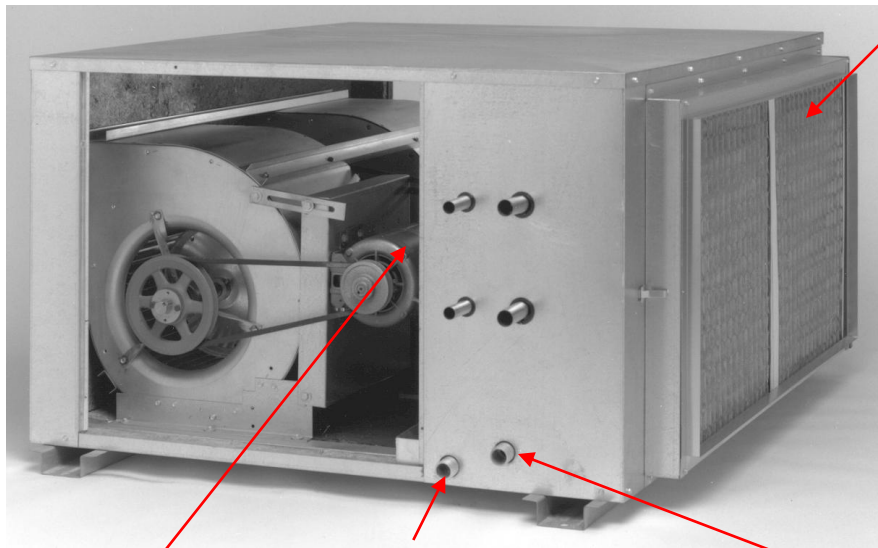
**Horizontal (AH)
Vertical (AV)**



**Horizontal,
Deluxe Cabinet
with Quarter-Turn Latches**



BELT-DRIVEN AIR HANDLERS 800 – 12,000 CFM

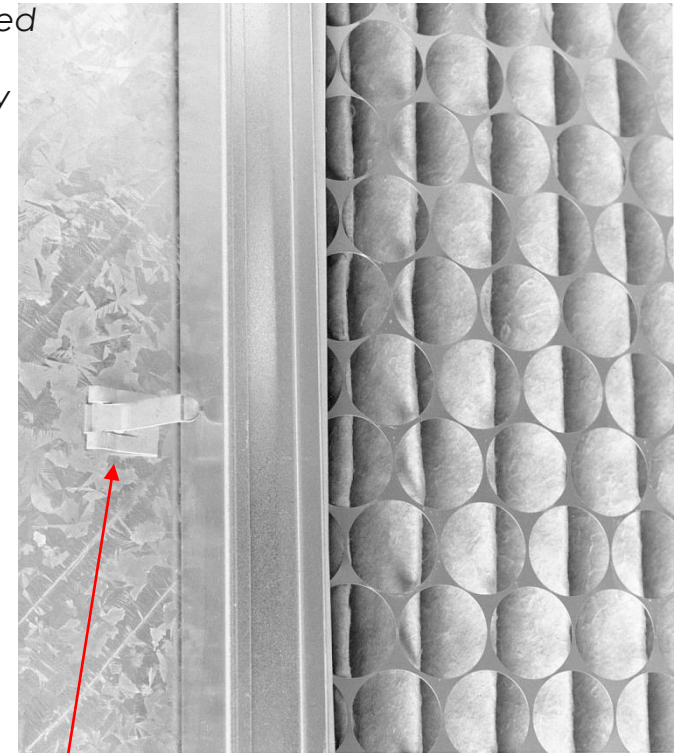


Two-inch Pleated Filter
30/30 Efficiency
Standard.

Primary Drain Connection
Secondary Drain Connection

Heavy-Duty Adjustable Motor Mount.

Motor and Drive. Selections Accommodating 800 to 12,000 CFM. Factory installed and Adjusted to Meet CFM & T.S.P. Requirements. Severe duty, high temperature, TEFC- Optional.



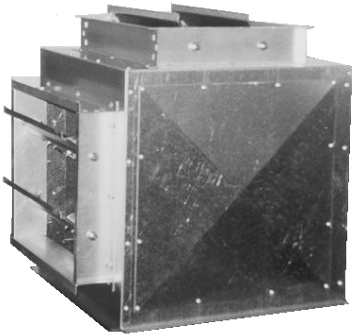
Standard Spring-Loaded Clips on Each Side for Easy Filter Access Without the Use of Tools.

Air Handler Base - Welded/Sealed Corners

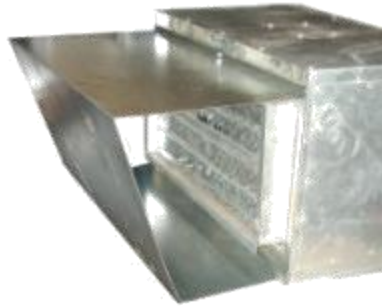


**BELT-DRIVEN AIR
HANDLERS
800 – 12,000 CFM**

Mixing Boxes



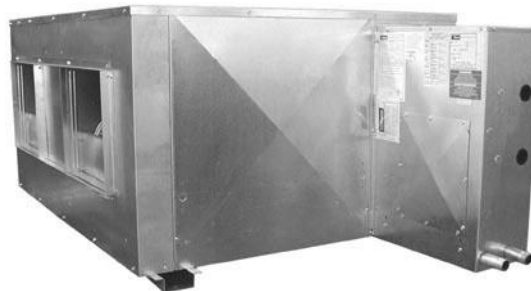
**Rain
Hood**



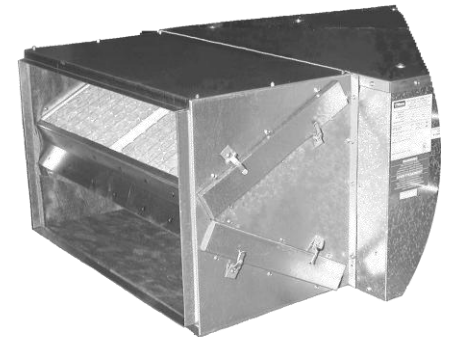
**Electric
Heat**



Ultraviolet Light



Control Enclosure



**V-Bank
Filter**



BELT-DRIVEN AIR HANDLERS 800 – 12,000 CFM

Control Enclosure





**VERTICAL-STACK,
HIGH-RISE
300 – 1,200 CFM**



Designer Riser (DR)

Easy Riser (ER)

Basic

Deluxe (D)

Master/Slave (M/S)

TwinPack

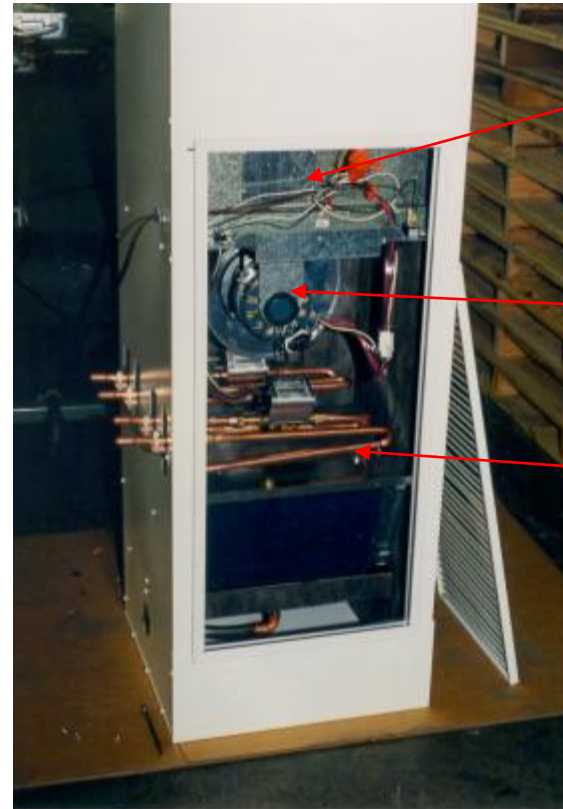
Draw-Through Design





VERTICAL-STACK, HIGH-RISE 300 – 1,200 CFM

Control
Package
Valve
Supports



Electrical Panel

Motor/Blower
Assembly

Expansion Loops

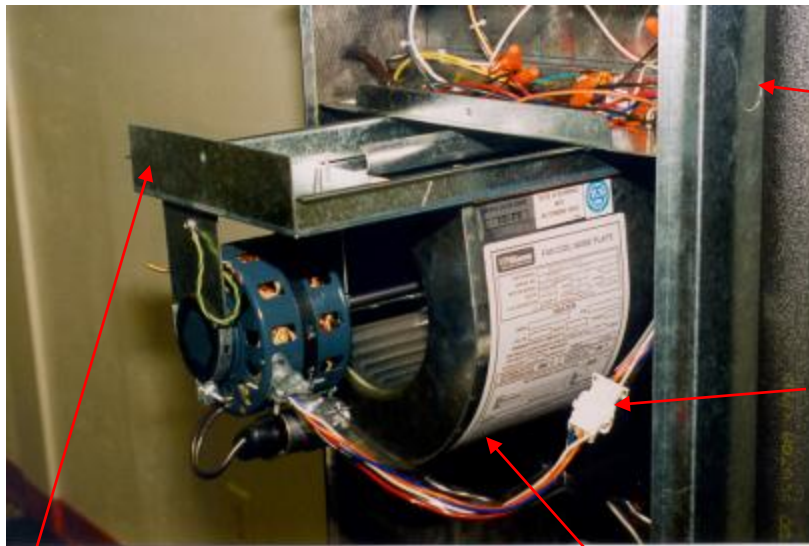


**VERTICAL-STACK,
HIGH-RISE
300 – 1,200 CFM**

Blower & Motor Assembly

Slide-out blower with name plate and plastic tubing for a whisper-quiet operation and quick disconnect

One screw removal for electrical access



Single-Point
Power Connection
Electrical Panel

Disconnect

Slide-out Blower Rack

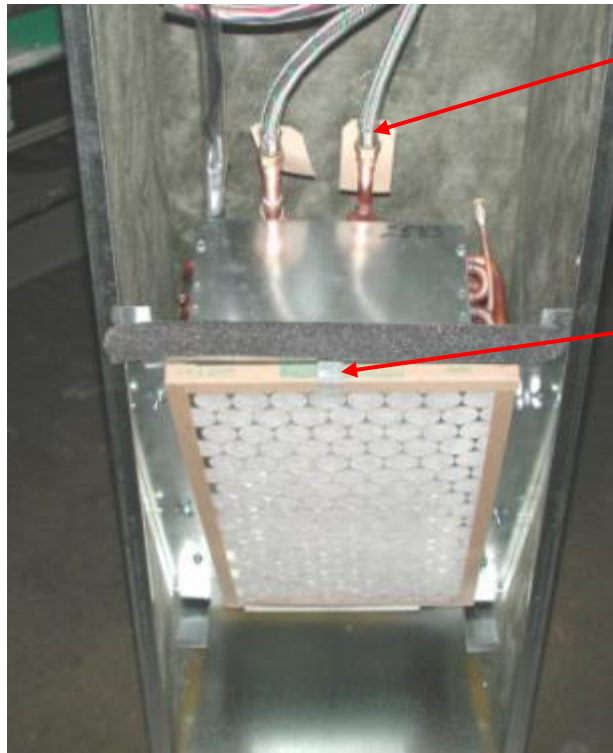
Name Plate





**VERTICAL-STACK,
HIGH-RISE
300 – 1,200 CFM**

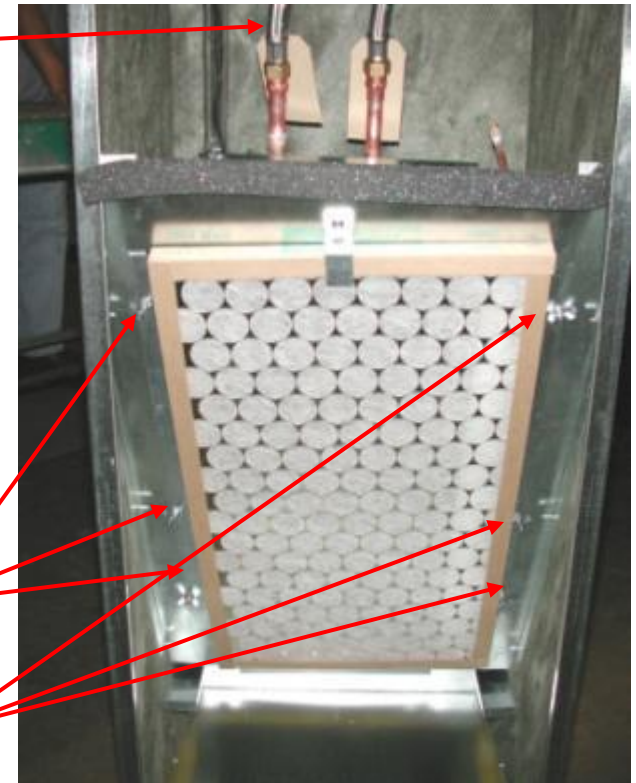
Removable Coil Assembly



Coil Connections are positioned in the center of the coil for easy piping to the left, right or rear of the fan coil unit

Easy Filter Access with Dedicated Space

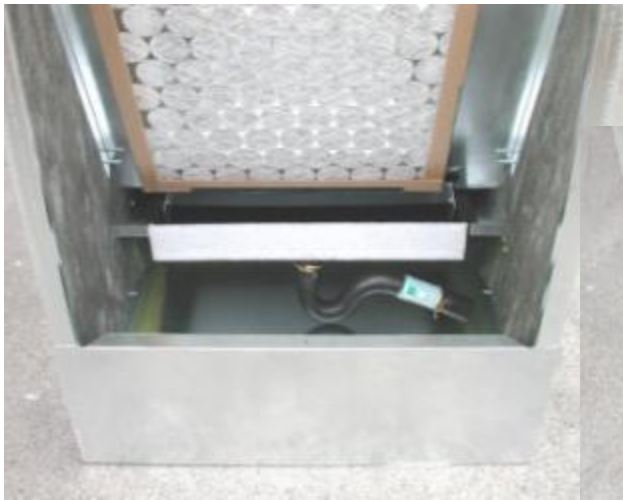
Coil can be easily removed by removing the six wing nuts in front of the coil





**VERTICAL-STACK,
HIGH-RISE
300 – 1,200 CFM**

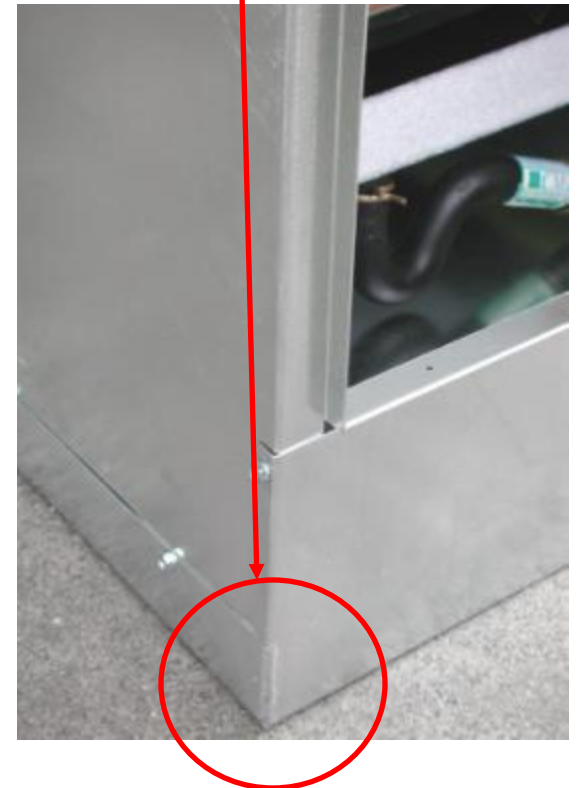
Removable Drain Pan



**Removable Drain Pan
Without the use of tools**



Welded Bottom Corners





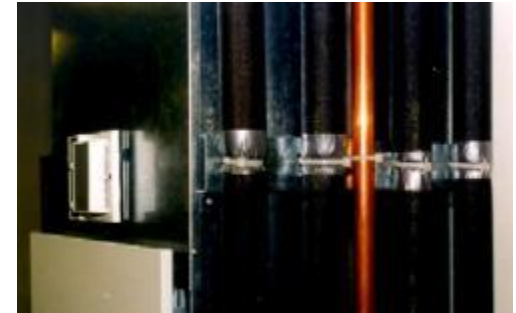
VERTICAL-STACK, HIGH-RISE 300 – 1,200 CFM

Riser top with Three-Inch Swage and Flared Lip for Ease of Installation floor-to-floor

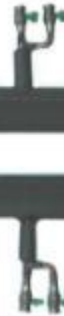


Stub outs with 4" knockout to allow for Expansion

Taped protection for riser insulation. Unit mounted thermostat – preset for drywall



Risers – K/L/M with up to 1" fiberglass, elastomeric or closed-cell insulation

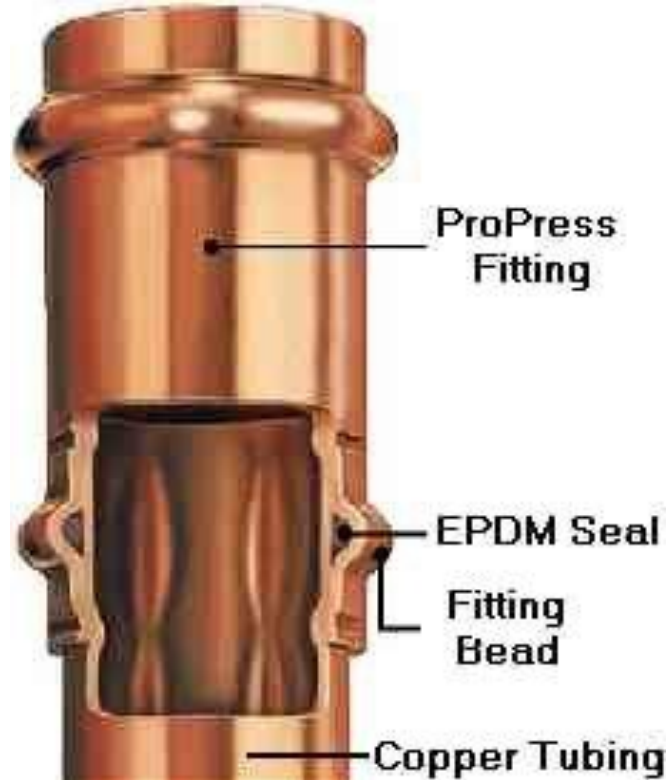


Fully insulated risers shipped loose with ball valves attached for field mounting



**VERTICAL-STACK,
HIGH-RISE
300 – 1,200 CFM**

Pro Press System



The Tools



Jaws & Rings



The Fittings





VERTICAL-STACK, HIGH-RISE 300 – 1,200 CFM

Custom Colors - "Architect's Choice"

Return-Air



- **Framed Recessed (No Hardware Required)**
 - Partially Louvered
 - Fully Louvered
 - Solid Panel
- **Hanging Style with Camlocks**
 - Louvered Pattern
 - Bar Style Louver
 - Solid Panel

Supply-Air

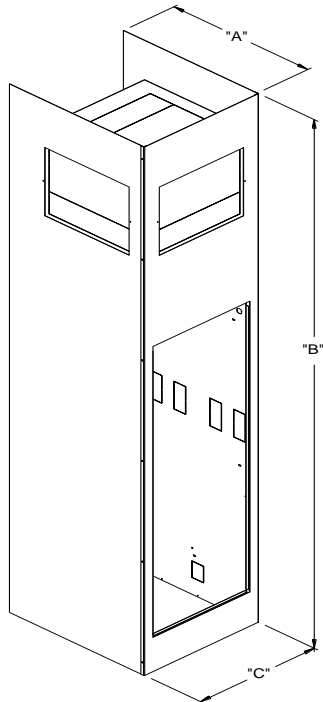


- **Single-Deflection**
 - **Double-Deflection**
 - Horizontal or Vertical Front Blades
 - **Opposed Blade Damper (OBD)**
- **Camlocks**
— **standard - locking**
— **Custom Color**
— **Cost Saving Grille Return and Supply-Air Packages**

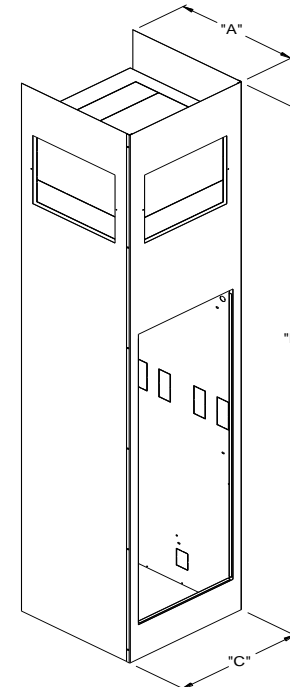


**VERTICAL-STACK,
HIGH-RISE
300 – 1,200 CFM**

**Cabinet Enclosure
Covers Cabinet and Risers**



**Cabinet Enclosure
Covers Cabinet Only**



Cabinet Enclosures

***Floor-to-Ceiling
Sturdy
Epoxy, Powder-Coat
Finished Panels***





**HORIZONTAL
DIRECT-DRIVE
100 – 1,200 CFM**

Horizontal (LH)

Basic (B)

Deluxe (D)

Flush, Bottom-Return (E)

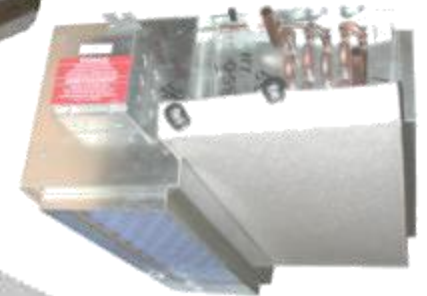
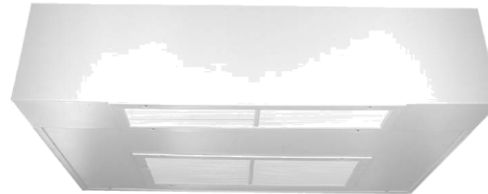
Flush (F)

Return-Air Plenum, Rear-Return (R)

Return-Air Plenum, Bottom-Return (Q)

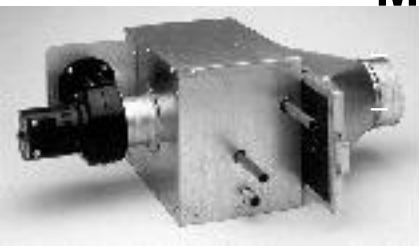
Blow-Through Design

Up to Six-Row Coil



Mini Horizontal (MH)

100 CFM, Four-Row
Draw-Through Design





HORIZONTAL DIRECT-DRIVE 100 – 1,200 CFM

Flush Model with telescoping frame and hinged access panel. Safety chain included.



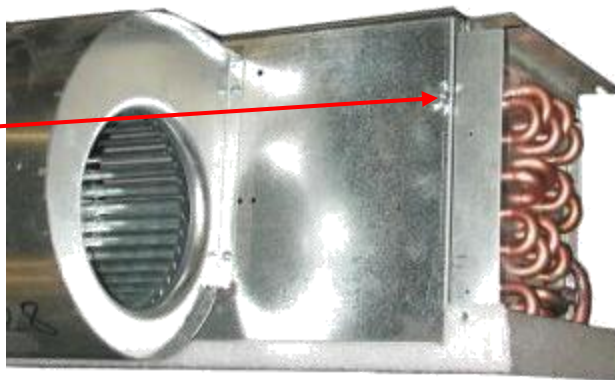
Motor Quick-Connect

Three-Speed Switch



Model Identification Label

Wings Nuts for Easy Removal of Blower Assembly





WALL-MOUNTED VERTICAL 200 – 1,200 CFM

Vertical (LV)

Basic (B)

Deluxe (D)

Front Discharge (F)

Modular (M)

Recessed (R)

Slope-Top (S)

Wrap Slope Top (W)



Blow-through design
Up to Five-Row Coil



**WALL-MOUNTED
VERTICAL
400 – 600 CFM**

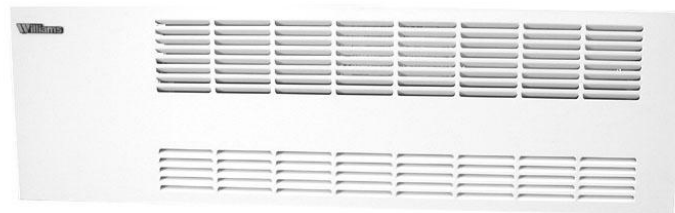
Low-Silhouette (LS)

Basic (B)

Deluxe (D)

Front (F)

Recessed (R)



Draw-through design
Up to Four-Row Coil



WALL-MOUNTED VERTICAL 400 – 600 CFM

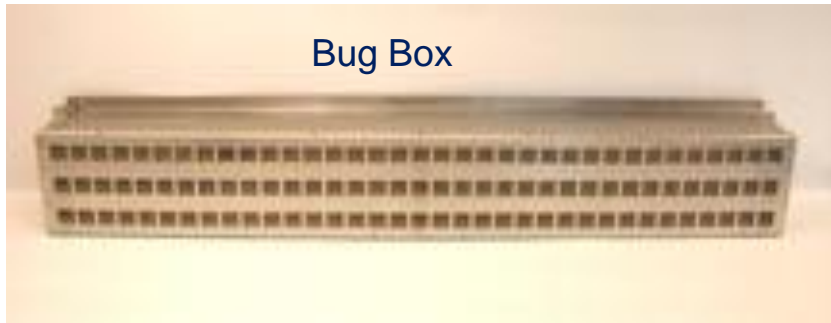
Thermostat Access



LV-M Modular



Bug Box





**HIGH-PERFORMANCE
HORIZONTAL
300 – 2,200 CFM**

Cased Flush (CH-F)

High-Static, Low Profile (HL)

High Static, Horizontal (HH)

Basic (B)

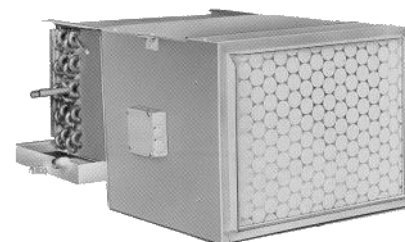
Deluxe (D)

Flush – Bottom Return & Supply (E)

Flush (F)

Return-Air Plenum, Bottom-Return (Q)

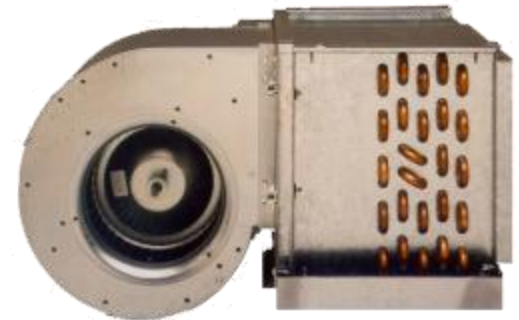
Return-Air Plenum, Rear-Return (R)





HIGH-PERFORMANCE HORIZONTAL 300 – 2,200 CFM

- Blow-through design (HL and HH)
- Draw-through design (CH)
- Up to Six-Row Coil
- Cabinet Extensions
- Electric Resistance Heat .5 to 9 kW
- Two-inch filter with rack / washable
- Double-deflection grilles
- Safety chain for access panel
- Supply and return-air openings equipped with a one-inch duct collars





HIGH-PERFORMANCE VERTICAL 400 – 2,200 CFM

Cased Vertical (CV)

Basic (B)

Basic Deluxe (D)

Front Return/Top-Supply (F)

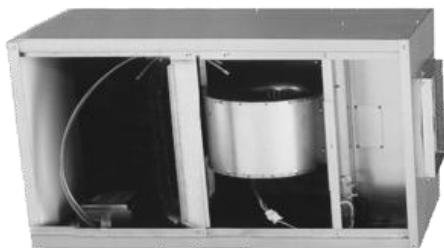
Rear-Return/Bottom-Supply (G)

Rear-Return/Bottom-Supply Deluxe (Q)

Front-Return/Top-Supply Deluxe (R)

Heat Only (H)

Heat Only Deluxe (O)





HIGH-PERFORMANCE VERTICAL 400 – 2,200 CFM

- Draw-through design
- Up to six-row coil
(CV-F up to eight-row)
- Slide-out blower/motor assembly
- Electric Resistance Heat 1 to 9 kW
- Two-inch filter with rack / washable
- Grilles

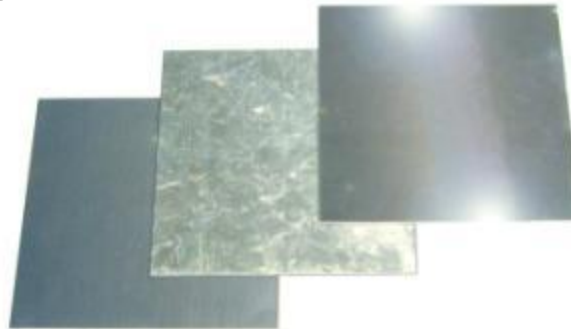




OPTIONS

Cabinet

- Upgraded steel gauges
- Soft-white or black powder-coated epoxy cabinet
- Coated finish subject to 500 hours or salt-spray testing to ASTM B117
- Custom colors
- Marine duty
- Stainless
- Weatherproofing
- Insulation
 - Fiberglass, foil-face, elastomeric, double-wall (perforated or solid) all in ½" to 1" thicknesses



Our numerous machines and electrostatic paint line make cabinet options limitless.



OPTIONS

Drain Pans

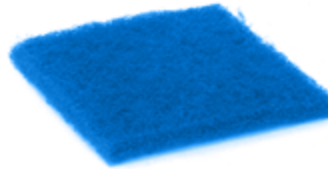
- Stainless
- Double-wall (galvanized or stainless)
- Porcelain
- Extended
- Secondary
- Removable
- Auxiliary Drain Tray
- Insulation
 - Fiberglass, foil-face or elastomeric in 1/2" to 1" thicknesses



Filters



- Standard 1"
Throwaway



- Washable



- 1"-2" Pleated
Merv8
Merv13



Labeling, Packaging & Shipping

- ❖ Individually identified with model number, serial number and customer-selected tag number
- ❖ Shipped in order of installation to eliminate excessive handling
- ❖ Corrugated covers over supply- and return-air openings keep units free of construction debris during construction phase
- ❖ Hot-Foam Packaging for valve package and unit protection during shipping
- ❖ Wooden crates insure damage-free units will arrive at the job site in “right-off-the-line” condition





Quick-Ship Programs

- Same-Day or Next-Day Shipment
- One-Week Quick Ship
- Two-Week Quick Ship
- Four-Week Quick Ship
- Six-to-Eight Week - Standard

