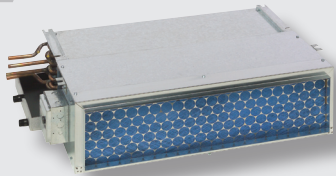


All Products Catalog FAN COILS & AIR HANDLERS



Standard and
Hi-Performance
Fan Coils



Belt Drive
Air Handlers



Vertical Stack
Fan Coils



Rooftops

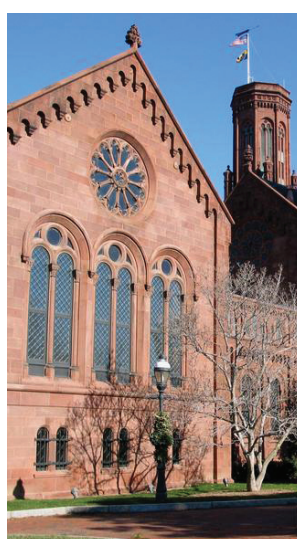




Table of Contents

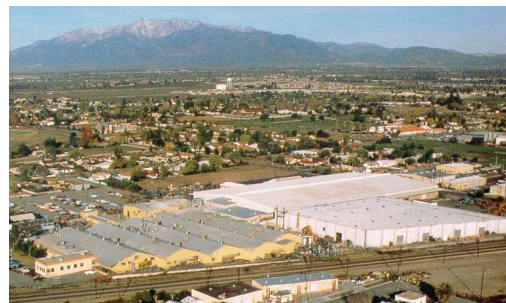
Williams Applied Products Group	1
Vertical Stack Fan Coils	2
Horizontal Fan Coils	4
Vertical Fan Coils	6
Hi-Performance Horizontal Fan Coils	8
Hi-Performance Vertical Fan Coils	10
Belt Drive Air Handlers	12
Rooftop Horizontal	Inside Back Cover

In a continuous effort to improve Williams Furnace Company products, the designs and specifications of the products described herein may be changed by Williams Furnace Company without notice. Because the designs and specifications may not be as described herein, you should always contact Williams Furnace Company for the most current design and specification information for Williams Furnace Company products. The designs and specifications provided herein are the opinions of Williams Furnace Company and are not to be considered as any express warranty. The designs and specifications are provided "as is" with no warranties whatsoever, including any warranty of merchantability, fitness for any particular purpose, or any warranty otherwise arising out of any proposal, specification or sample. Without limitation, Williams Furnace Company disclaims all liability for cost of procurement of substitute goods, lost profits, loss of use, or any incidental, consequential, direct, indirect, or special damages, whether under contract, tort, warranty, or otherwise, arising in any way out of the use or reliance upon these designs or specifications or any information provided herein.



For 90 years, Williams has been a market leader in providing high quality HVAC products for residential and commercial buildings. Today, the Williams Applied Products Group continues the proud tradition by offering to the commercial/industrial market more configurations and size options of quality fan coils and blower coils/air handlers than any other HVAC company in North America.

The Williams Applied Products Group, based in Oklahoma City, Oklahoma, serves all US and overseas markets with complete application engineering, sales, marketing and administrative services. Served by company



factories in Colton, California and Phoenix, Arizona, the Applied Products Group uses the resources of nearly 600,000 square feet of manufacturing and warehouse facilities



to provide high quality products to some of the most discriminating customers in the world.

The Williams Applied Products Group pledge is to provide complete, high quality and timely support for the successful completion of your construction projects involving engineered products offered by Williams. We believe in a partnering attitude that creates superior projects and high levels of satisfaction.



Basic DR-B

CABINET DESIGN

Designer Riser Vertical-Stack fan coil is 97" in height and best recognized for its low-cost installation in multi-story facilities. A prime feature of the Designer Riser unit is full, easy access through the 36" return-air grille to the coil, slide-out blower, with quick-connect plug, filter and drain pan. The uniquely engineered sound shield turning vane in the supply-air plenum provides even distribution of air flow across the grille resulting in whisper-quiet operation. Designer Riser fan coils are offered in sizes ranging from 300 to 1200 CFM and in four different configurations. All Vertical-Stack fan coil units are designed for draw-through applications.

BASIC - DR-B

Designed for concealed applications along room walls or in corners. Units are constructed of heavy-gauge galvanized steel and insulated with 1/2" thick neoprene-coated fiberglass.

DELUXE - DR-D

Same as Basic, except Deluxe cabinet is manufactured of cold-rolled steel, phosphate conversion-coated with a powder-coated, soft-white epoxy finish. Deluxe available for Basic/Master/Slave and TwinPack.

MASTER and SLAVE - DR-M, DR-S

Master and Slave have the same internal features as the Basic and are designed to work together. The Master/Slave combination features two fan coil units piped to a common set of risers on the Master. Each fan coil has its own valves and controls. Masters piped in series, one above the other.

TWINPACK

TwinPack is a Master and Slave fan coil piped and joined at the factory. The two fan coils are shipped and installed as one unit. Drywall thicknesses may be selected to meet local codes and is factory installed on each fan coil. Williams custom builds the TwinPack for specific job requirements and meets UL One-Hour, Through-Penetration Fire-Stop System No. W-L-7089. Each unit has its own valves, controls and unique lifting brackets for easy handling. Fire-stop must be field-furnished and applied per code requirements after installation.



Deluxe DR-D



Basic ER-B

CABINET DESIGN

Easy Riser Vertical-Stack fan coil is best recognized in the industry for its low-cost installation in multi-story facilities. Easy-Riser fan coils are draw-through design, ranging from 300 to 1200 CFM and are available in four configurations. ER units have full easy access through the return-air grille to the coil, slide-out blower, with quick-connect plug, filter and insulated drain pan.

BASIC - ER-B

Designed for concealed applications along room walls or in corners. Unit is constructed of heavy-gauge galvanized steel and insulated with 1/2" thick neoprene-coated fiberglass.

DELUXE - ER-D

Same as Basic, except Deluxe cabinet is manufactured of cold-rolled steel, phosphate conversion coated with a soft-white, powder-coated epoxy finish. Deluxe available for Basic/Master/Slave and TwinPack.



TwinPack

MASTER and SLAVE - ER-M, ER-S

Master and Slave have the same internal features as the Basic and are designed to work together. The Master/Slave combination features two separate fan coils piped to a common set of risers on the Master. Each fan coil has its own valves and controls. Masters piped in series, one above the other.

TWINPACK

Master and Slave fan coils piped and joined at the factory. The two fan coils are shipped and installed as one unit. Drywall is installed on each fan coil. Drywall thicknesses may be selected to meet local codes and is factory installed on each fan coil. Williams custom builds the TwinPack for specific job requirements and meets UL One-Hour, Through-Penetration Fire-Stop System No. W-L-7089. Each unit has its own valves, controls and unique lifting brackets for easy handling. Fire stop must be field-furnished and applied per code requirements after installation.



Master and Slave ER-M, ER-S



FEATURES

- Heavy-gauge galvanized steel cabinet insulated with 1/2" thick neoprene-coated fiberglass.
- Coils, 1/2" OD copper tube with aluminum fins (12 FPI) equipped with manual-air vent. DX and steam coils do not include a manual-air vent. Coils are 100% underwater pressure tested to 350 PSI with a 300 PSI working pressure.
- Galvanized drain pan is powder-coated epoxy with 1/8" thick closed-cell insulation and has a formed p-trap drain connection.
- Three-speed, 115/1/60 PSC motor with quick-connect plug.
- Easy slide-out, draw-through blower and motor assembly.
- Controls and motors are factory-wired and terminated in a junction box for single-point power supply.
- Expansion compensation loops for expansion and contraction assures quiet operation.
- Half-inch return-air collar for drywall.
- One supply-air opening, except ER12 has two openings.
- One-inch fiberglass, throwaway filter.
- Protective cardboard covers grille openings during shipment and construction.
- Individually tagged and crated as scheduled for installation.
- UL & cUL approved, ARI certified and 100% factory tested.

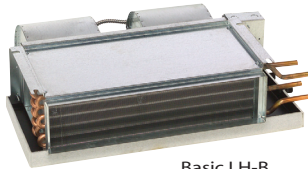
OPTIONS

- Soft-white, powder-coated epoxy cabinet.
- Drain pans - stainless-steel, porcelain and double-wall.
- Three-speed motor 208-230/1/50-60 Hz and 277/1/50-60 Hz.
- 1/2" to 1" Insulation - fiberglass, foil-face, elastomeric and double-wall (solid or perforated).
- Coils - copper fins/tubes, phenolic-coated, stainless-steel end plates -- available from one- to six-row coils.
- Cabinet - Enclosures, Deluxe and Concealed.
- Systems - two- or four-pipe; hydronic heating/cooling, steam, direct-expansion (DX) and/or electric heat.
- Controls - wide selection of factory-mounted valves and controls.
- Filters - two-inch thick throwaway, washable and metallic.
- Grilles - supply and return, single- and double-deflection, additional openings and custom colors.
- Thermostat with quick-connect plug.
- Outside-Air Openings - motorized and manual outside-air dampers.
- Electric Resistance Heat from 1 to 7.5 kW.
- Pedestal Bases.
- Risers and extensions available in type M, L and K copper with fiberglass, elastomeric and closed-cell insulation.
- Risers on Master fan coils have a 3" long and 5/8" swaged solder joint to connect to the Slave unit.
- Riser Termination Valve Package.



CABINET DESIGN

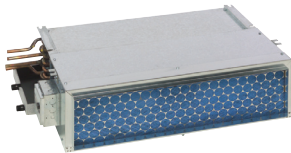
Low-Static, direct-drive fan coils range from 200 to 1200 CFM. Units are constructed of heavy-gauge galvanized steel and insulated with 1/2" thick neoprene-coated fiberglass. Low-Static Horizontal fan coils are a blow-through design. Drain pans are powder-coated epoxy with 1/8" thick closed cell insulation featuring primary and secondary drain connections. The low-profile design is particularly effective above drop ceilings, in closets and fits into spaces with tight vertical dimensions. They are designed for jobs where low-static pressure is required.



Basic LH-B

BASIC - LH-B

Basic fan coils consists of coil, blower assembly, with quick-connect plug, and insulated drain pan. Whether in hotels, motels or apartments, this fan coil is perfectly adaptable because of its low profile. This model has no exterior cabinet.



Return-Air Plenum
LH-R

RETURN-AIR PLENUM - LH-R

Return-Air Plenum is the same as our Basic with a galvanized rear return-air plenum (bottom return optional), insulated with a 1/2" neoprene-coated fiberglass. It is also effective for mounting above ceilings, in closets, hallways or bathroom areas. The plenum conceals the unit's blower motor, which is easily accessible for service by removing the bottom panel.



Deluxe LH-D

DELUXE - LH-D

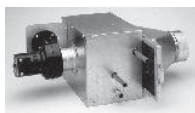
Deluxe is designed for horizontal, exposed ceiling mount. Deluxe is a Basic fan coil with cabinet manufactured of cold-rolled steel, phosphate conversion-coated then finished in a soft-white, powder-coated epoxy. It is adaptable for remodel situations where the addition of ductwork is limited.



Flush LH-F

FLUSH - LH-F

Flush is a recessed fan coil for flush ceiling applications. The telescoping frame and hinged access panel accommodate any type of ceiling. The access panel is manufactured of cold-rolled steel with soft-white powder-coated epoxy finish.



Mini-Horizontal
MH

MINI HORIZONTAL - MH

Mini-Horizontal fan coil is 100 CFM, constructed of heavy-gauge galvanized steel and insulated with 1/2" thick neoprene-coated fiberglass. Consisting of a coil, washable filter and easily removable blower assembly. Great for applications requiring 100% outside air for dehumidification, or areas requiring preheat/reheat. Designed for smaller individual rooms in hot humid or extremely cold climates.



FEATURES

- Heavy-gauge galvanized steel cabinet and insulated with 1/2" thick neoprene-coated fiberglass.
- Coils, 1/2" OD copper tube with aluminum fins (12 FPI) equipped with manual-air vent. DX and steam coils do not include manual-air vent. Coils are 100% underwater pressure tested to 350 PSI with a 300 PSI working pressure.
- Drain pan is powder-coated epoxy with a 1/8" thick closed-cell insulation and has primary and secondary drain connections.
- Three-speed, 115/1/60 PSC motor with quick-connect plug (Single speed SP motor on Mini-Horizontal).
- Controls and motors are factory-wired and terminated in a junction box for single-point power supply.
- One-inch duct collar on return- and supply-air openings (applies to Return-Air Plenum units only).
- Swing-down, hinged return-air grille/access door on deluxe and flush models.
- Deluxe unit has single-deflection supply-air grille.
- One-inch fiberglass, throwaway filter, except LH-B (Basic).
- Individually tagged, crated and shipped as scheduled for installation.
- UL & cUL approved, ARI certified and 100% factory tested.

OPTIONS

- Soft-white, powder-coated epoxy cabinet.
- Drain pans - stainless-steel, porcelain and double-wall.
- Insulation - fiberglass, foil-face, elastomeric and double-wall (Solid and perforated) in 1/2" and 1" thicknesses.
- Coils - copper fins/tubes, phenolic-coated, stainless-steel end plates all available from one- to six-rows.
- Systems - Two- or Four-pipe; Hydronic cooling/heating, Steam, Direct-expansion (DX) and/or Electric Heat.
- Cabinet - Deluxe, Flush and custom colors.
- Controls - wide selection of factory-mounted valves and controls.
- Filters - two-inch thick throwaway (except Deluxe and Flush), washable and metallic.
- Flow-Control Pump for water heating applications.
- Grilles - double-deflection and custom colors.
- Ultraviolet Lights.
- Electric Strip Heat from 1 to 5 kW (not available on Mini-Horizontal).



CABINET DESIGN

Low-Static Vertical fan coils are available in sizes ranging from 200 to 1200 CFM. Vertical fan coils are blow-through design. The vertical, upflow design is ideal for heating and cooling requirements in office buildings, college dormitories, churches, hospitals, hotels and motels. Vertical fan coil units are designed to be mounted on the floor or wall.



Basic LV-B

BASIC - LV-B

Basic fan coils are manufactured of heavy-gauge galvanized steel and insulated with 1/2" thick neoprene-coated fiberglass. The Basic unit consists of the coil, galvanized powder-coated, epoxy drain pan with 1/8" thick closed cell insulation, filter and blower assembly with quick-connect plug. It is designed for furred-in applications with a field-fabricated, custom enclosure.



Deluxe LV-D

DELUXE - LV-D

Deluxe is the same as the Basic installed into a fully-cased decorative cabinet. Constructed of cold-rolled steel, phosphate-conversion coated and soft-white, powder-coat epoxy finish. This unit is intended for "free-blow" exposed wall mounting. It is most commonly found under window sills in office buildings or motels. The one-piece, wraparound front panel is easily removed for complete access for servicing. Filters are concealed from sight and easily removable without the use of tools. The Deluxe unit features four-way diffusing grilles for customized air discharge and black control door to complement the grille.



Modular LV-M

MODULAR - LV-M

Modular is the same as the slope top with solid sides and the cabinet is designed with a flat top. Removable, one-piece front panel provides complete access to the fan coil. This model has been redesigned and enhanced with features to allow ease of maintenance and quick component servicing. The filter, blower assembly with quick-connect plug, drain pan and coil are easily removed. Cabinet includes black top bar-type discharge, front return-air grille and white top control door. This fan coil is great for those projects with limited space.



Recessed LV-R

RECESSED - LV-R

Recessed unit is designed for recessed wall installation where space is limited. This design is ideal for hallways, bathrooms and other small areas. The access panel is easily removable and is finished in our soft-white, powder-coat epoxy finish.



Slope Top LV-S

SLOPE TOP - LV-S

Slope Top cabinet is designed with a full sloping top. It features solid-side panels so that units may be set side-by-side, for long corridor applications. This unit is ideal for schools, hospitals, hotels, motels and office buildings. The full sloping top discourages the placement of books and other items over the stamped, louvered discharge grilles. The Slope Top unit features a white control door on top.



Front Discharge LV-F

FRONT DISCHARGE - LV-F

Front Discharge fan coil has the same features as the Modular but the cabinet is designed for front discharge and return air grilles. Removable front panel below discharge air grille provides complete access to the unit for servicing the filter, motor, coil, drain pan and piping package. This unit is fully exposed, attractively styled and ideal for the perimeter cooling/heating in public buildings, offices, hospitals, hotels, motels and schools. This front discharge fan coil is soft-white, powder-coated epoxy finish, white top control door with black, bar-type return-air and discharge grilles.



Wrap Slope Top LV-W

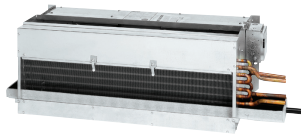
WRAP SLOPE TOP - LV-W

Wrap Slope Top is the same as the Slope Top but the cabinet is designed with our wraparound front panel. The cabinet top is flat for three inches from the wall to allow for standard curtains or blinds which hang over the window sill, then continues into a sloping top. Ideal for hotel, motel and dormitory room redesigns, allowing for expensive window decors to remain the same, while discouraging anything being placed over the discharge grille. The Wrap Slope Top cabinet is manufactured of cold-rolled steel, phosphate conversion-coated, soft-white, powder-coated epoxy finish with stamped louvered discharge grille and top control door.



CABINET DESIGN

Low-Silhouette fan coils are available in 400 to 600 CFM and designed for under-the-window applications. The low-silhouette allows unobstructed window views from hotel or motel rooms, offices, public buildings and hospitals. Coils are limited to four rows. Two units may be set side-by-side where 800 to 1200 CFM is required.



Basic LS-B

BASIC - LS-B

Basic unit is designed for furred-in, under-the-window applications. Typically, the 14-1/2" height unit is placed under a window with a field-furnished decorative enclosure concealing the unit. This allows for full-light exposure and does not inhibit vision through the window. Basic fan coils consists of heavy-gauge galvanized chassis, powder-coated, epoxy drain pan with 1/8" thick closed-cell insulation, blower assembly with quick-connect plug, throwaway filter and top-discharge duct collar.



Deluxe LS-D

DELUXE - LS-D

Deluxe has the same features as the Basic with its top vertical discharge, low-silhouette design. It's attractive, streamlined cabinetry blends with any room decor and has become a proven favorite with architects, engineers and contractors. Even though freestanding, the unit provides for the unlimited movement of drapes, shades and blinds while at peak performance. The cabinet is in soft-white, powder-coated epoxy finish with black four-way diffusing supply-air grille and control access panel.



Front LS-F

FRONT DISCHARGE - LS-F

Front-Discharge fan coil has the same unit design features as the Deluxe. Cabinet and top control access panel are soft-white, powder-coated epoxy finish with black, powder-coated epoxy finish, bar-type front-discharge and return-air grilles.



Recessed LS-R

RECESSED - LS-R

Recessed unit is designed for recessed wall installation where space is limited. This design is ideal for hallways, bathrooms and other small areas. The access panel is easily removable and is finished in our soft-white, powder-coat epoxy finish.

FEATURES

- Heavy-gauge galvanized-steel cabinet insulated with 1/2" thick neoprene-coated fiberglass.
- Coils, 1/2" OD copper tube with aluminum fins (12 FPI) equipped with manual-air vent. DX and steam coils do not include manual-air vent. Coils are 100% underwater pressure tested to 350 PSI with a 300 PSI working pressure.
- Galvanized drain pan is powder-coated epoxy with 1/8" thick closed-cell insulation and drain connection.
- Three-speed, 115/1/60 PSC motor with quick-connect plug.
- Controls and motors are factory-wired and terminated in a junction box for single-point power supply.
- Stamped, louvered discharge grille on LV-R, LV-S, LV-W and LS-R.
- Black, bar-type discharge grille on LV-F, LV-M and LS-F.
- Multiple, four-way diffusing discharge grilles on LV-D and LS-D.
- One-inch fiberglass, throwaway filter.
- Rear mounting holes provided for wall mounting.
- UL & cUL approved, ARI certified and 100% factory tested.

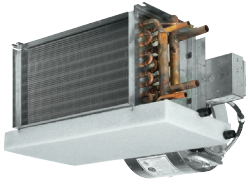
OPTIONS

- Soft-white, powder-coated epoxy cabinet.
- Drain Pans - stainless-steel, porcelain and double-wall.
- Insulation - fiberglass, foil-face, elastomeric and double-wall (solid and perforated) in 1/2" and 1" thicknesses.
- Coils - copper fins/tubes, phenolic-coated, stainless-steel end plates -- all options are available on one- to six-row coils.
- Systems - Two- or four-pipe; Hydronic cooling/heating, Steam, Direct-expansion (DX) and/or Electric Heat.
- Cabinet - Deluxe, Front-Discharge, Recessed and custom colors.
- Grilles - eliminates the need for closet doors and has custom colors.
- Controls - wide selection of factory-mounted valves and controls.
- Filters - washable and metallic.
- Electric Strip Heat from 1 to 5 kW.
- Ultraviolet Lights.



CABINET DESIGN

High-Static Horizontal direct-drive fan coils range from 600 to 2200 CFM. Units are constructed of heavy-gauge galvanized steel and insulated with 1/2" thick neoprene-coated fiberglass. Horizontal fan coils are blow-through design with a powder-coated epoxy drain pan with 1/8" thick, closed-cell insulation featuring primary and secondary drain connections. The high-static motor is virtually unsurpassed in its variety of uses where higher static duct runs are encountered. It is designed for jobs where high-static pressure (0.50 max.) is required.



Basic HH-B

BASIC - HH-B

Basic fan coil is manufactured of heavy-gauge galvanized steel, insulated drain pan with primary and secondary drain connections and easily removable blower assembly with quick-connect plug. This fan coil is highly diversified to meet the varying needs of higher static applications within concealed locations. Applications include drop ceilings, over closets, in offices, schools, condominiums and apartments.



Deluxe HH-D

DELUXE - HH-D

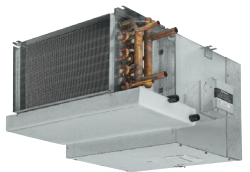
Deluxe is designed for horizontal, exposed ceiling mount. Deluxe is a Basic fan coil with cabinet manufactured of cold-rolled steel, phosphate conversion-coated then finished in a soft-white, powder-coated epoxy. It is adaptable for remodel situations where the addition of ductwork is limited.



Flush HH-F

FLUSH - HH-F

Flush is a recessed unit for flush ceiling applications. Flush fan coil has all the design features of the Basic with a telescoping frame and soft-white, powder-coat epoxy finished hinged access panel to accommodate any type of ceiling.



Return-Air
Plenum
HH-R

RETURN-AIR PLENUM - HH-R

Return-Air Plenum is the same as the Basic with a galvanized return-air plenum with rear-return (bottom optional) and insulated with a 1/2" neoprene-coated fiberglass. It is also effective for mounting above ceilings, in closets, hallways or bathroom areas. The plenum conceals the blower motor which is easily accessible for servicing by removing the bottom panel.



Cased Flush CH-F

CASED FLUSH - CH-F (400 - 800 CFM)

Cased Flush is a horizontally ducted fan coil which is aligned flush with the ceiling. It is ideal for horizontal applications in apartments, condominiums and motels requiring either a drop-ceiling or soffit installation. The swing-down access panel makes fast and easy filter removal and routine maintenance. Bottom return-air is standard (bottom return-air optional). Available in sizes ranging from 400 to 800 CFM.



FEATURES

- Heavy-gauge galvanized-steel cabinet insulated with 1/2" thick neoprene-coated fiberglass.
- Coils, 1/2" OD copper tube with aluminum fins (12 FPI) equipped with manual-air vent. DX and steam coils do not include manual-air vent. Coils are 100% underwater pressure tested to 350 PSI with a 300 PSI working pressure.
- Galvanized drain pan is powder-coated epoxy with 1/8" thick closed-cell insulation and has primary and secondary drain connections.
- Three-speed, 115/1/60 PSC motor with quick-connect plug.
- Easy slide-out, blow-through blower and motor assembly.
- Controls and motors are factory-wired and terminated in a junction box for single-point power supply.
- One-inch duct collar on return- and supply-air openings.
- One-inch fiberglass, throwaway filter, except HH-B.
- Individually tagged, crated and shipped as scheduled for installation.
- UL & cUL approved, ARI certified and 100% factory tested.

OPTIONS

- Soft-white, powder-coated epoxy cabinet.
- Drain Pans - stainless-steel, porcelain and double-wall.
- Insulation - fiberglass, foil-face, elastomeric and double-wall (solid and perforated) in 1/2" and 1" thicknesses.
- Coils - copper fins/tubes, phenolic-coated, stainless-steel end plates -- all options are available on one- to six-row coils.
- Systems - Two- or four-pipe; Hydronic cooling/heating, Steam, Direct-expansion (DX) and/or Electric Heat.
- Cabinet - Deluxe, Flush and custom colors.
- Grilles - double-deflection and custom colors.
- Controls - wide selection of factory-mounted valves and controls.
- Filters - two-inch thick throwaway (except Deluxe and Flush), washable and metallic.
- Flow-Control Pump for water heating applications.
- Ultraviolet Lights.
- Electric Strip Heat from 1 to 9 kW.



CABINET DESIGN

Cased Vertical fan coils range from 400 to 2,200 CFM. Units are constructed of heavy-gauge galvanized steel and insulated with 1/2" thick neoprene-coated fiberglass. Cased vertical fan coils are a draw-through design, featuring slide-out blowers with quick connect plug. Galvanized drain pan is powder-coated epoxy with 1/8" thick closed cell-insulation featuring primary and secondary drain connections.



Basic Bottom Return - CV-B



Basic Front Return - CV-K

BASIC - CV-B or CV-K (CV-D or CV-J PAINTED)

Basic is a high-static, ducted vertical cased, unpainted fan coil with a bottom (B) or front (K) return and return-air plenum. It is primarily used in vertical floor-mounted or hideaway applications. This fan coil is furred into partition walls or hidden in closets, utility rooms and other concealed locations with a ducted discharge. A removable front access panel facilitates easy servicing of the coil, blower assembly, with quick-connect plug and filter. A one-inch discharge duct flange is standard on top panel of each unit.

DELUXE - CV-D or CV-J

Deluxe cabinets are manufactured of cold-rolled steel, phosphate conversion-coated then finished in a soft-white, powder-coated epoxy. Deluxe option is available on all Cased Vertical cabinet styles.



Deluxe CV-D

DIRECT FRONT RETURN - CV-F (CV-R PAINTED)

Direct Front Return is a high-static, ducted vertical fan coil for installation in a closet-type enclosure. The front is removable for easy-service access to the slide-out blower assembly, with quick-connect plug. Front return-air filter may be removed without removing front panel. Top-discharge opening has a one-inch duct collar. CV-F shown with Return-Air grille option allows unit to be furred in, grille mounted to drywall for easy access without the expense of a closet door. Also available with front supply.



Direct Front Return - CV-F

HEAT ONLY - CV-H (CV-O PAINTED)

Heat only is a high-static, ducted vertical fan coil for installation virtually anywhere. Front panel is removable for filter removal and easy service access to the slide-out blower, with quick-connect plug. Top discharge opening has a one-inch duct collar. This heat only version does not need a drain pan and can be installed horizontally.

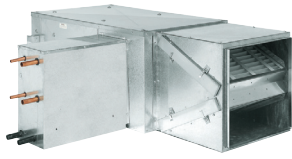


FEATURES

- Heavy-gauge galvanized-steel cabinet insulated with 1/2" thick neoprene-coated fiberglass.
- Coils, 1/2" OD copper tube with aluminum fins (12 FPI) equipped with manual-air vent. DX and steam coils do not include manual-air vent. Coils are 100% underwater pressure tested to 350 PSI with a 300 PSI working pressure.
- Galvanized drain pan is powder-coated epoxy with 1/8" thick closed-cell insulation and has primary and secondary drain connections.
- Three-speed, 115/1/60 PSC motor with quick-connect plug.
- Easy slide-out, draw-through blower and motor assembly.
- Controls and motors are factory-wired and terminated in a junction box for single-point power supply.
- One-inch duct collar on supply-air openings.
- One-inch fiberglass, throwaway filter.
- Protective cardboard covers openings during shipment and construction.
- Individually tagged and crated as scheduled for installation.
- UL & cUL approved, ARI certified and 100% factory tested.

OPTIONS

- Soft-white, powder-coated epoxy cabinet.
- Drain Pans - stainless-steel, porcelain and double-wall.
- Insulation - fiberglass, foil-face, elastomeric and double-wall (solid and perforated) in 1/2" and 1" thicknesses.
- Coils - copper fins/tubes, phenolic-coated, stainless-steel end plates -- all options are available on one- to six-row coils.
- Systems - Two- or four-pipe; Hydronic cooling/heating, Steam, Direct-expansion (DX) and/or Electric Heat.
- Cabinet - Deluxe.
- Grilles - eliminates the need for closet doors - available in custom colors.
- Controls - wide selection of factory-mounted valves and controls.
- Filters - two-inch thick throwaway, washable and metallic.
- Flow-Control Pump for water heating applications.
- Ultraviolet Lights.
- Mixing Boxes.
- Electric Strip Heat from 1 to 9 kW.
- Risers.



Horizontal Basic
AH-B



Vertical Basic
AV-B



Horizontal Deluxe
AH-D



Vertical Deluxe
AV-D

CABINET DESIGN

Air handlers range from 800 to 12,000 CFM in either horizontal or vertical cabinet styles. Units are constructed of heavy-gauge galvanized steel and insulated with 1/2" thick neoprene-coated fiberglass. Our draw-through designs are available for either indoor or outdoor applications and are equipped with blowers that can handle up to 3.75 inches of total static pressure. Coils are available from one- to ten-rows, in any combination of chilled- or hot-water, steam or direct-expansion (DX) with electric heat option. Galvanized drain pans are powder-coated epoxy with 1/8" thick closed-cell insulation featuring primary and secondary drain connections. Coil, motor and drive are ordered separately.

BASIC - AH-B/AV-B

Cabinets are heavy-gauge galvanized steel and insulated with 1/2" thick neoprene-coated fiberglass. Air Handlers are belt-driven with forward-curved and dynamically balanced blower. A flat filter section, with a two-inch, 30 percent pleated efficiency filter, is included and access doors are located on both sides of the unit for easy maintenance. Supply and return-air openings equipped with one-inch duct collar.

DELUXE - AH-D/AV-D

Same features as Basic, except cabinet is manufactured from cold-rolled steel, phosphate-conversion-coated and finished in soft-white, powder-coated epoxy. Ideal where a finished cabinet is desired.

FEATURES

- Heavy-gauge galvanized steel cabinet insulated with 1/2" thick neoprene-coated fiberglass.
- Coils, 1/2" OD copper tube with aluminum fins (10 FPI) equipped with manual-air vent. DX and steam coils do not include manual-air vent. Coils are 100% underwater pressure tested at 350 PSI with a 300 PSI working pressure.
- Galvanized drain pan is powder-coated epoxy with 1/8" thick closed-cell insulation and has primary and secondary drain connections.
- Belt-driven, draw-through design with forward-curved and dynamically balanced blowers.
- Adjustable, variable-pitch drive sheave and cast-iron pulley keyed to motor shaft (order to match application).
- Controls and motors are factory-wired and terminated in a junction box for single-point power supply.
- Two-inch thick, 30/30 pleated filter, flatly mounted, with spring-loaded clips on the access door for easy maintenance without the use of tools.
- Individually tagged and crated as scheduled for installation.
- UL and cUL approved, ARI certified and 100% factory tested.

OPTIONS

- Soft-white, powder-coated epoxy cabinet.
- Drain Pans -- stainless-steel and double-wall.
- Insulation -- fiberglass, foil-face, elastomeric and double-wall (solid or perforated) in 1/2" and 1" thicknesses.
- Coils -- copper fins/tubes, phenolic coated, stainless-steel end plates all options are available on one- to ten-row coils.
- Systems -- Two- or four-pipe, Hydronic cooling/heating, Steam, Direct-expansion (DX) and/or Electric Heat.
- Cabinet -- Deluxe, Weatherproof, Deluxe-Weatherproof, Double-Wall (Solid or Perforated) and Top or Bottom Supply.
- Controls -- wide selection of factory-mounted valves, controls and enclosures.
- Motors -- severe-duty, high-temperature, ODP, TEFC; 115, 208, 230, 277, 460, 575 Voltages.
- Filters -- two-inch thick throwaway, washable, metallic and V-Bank.
- Electric Resistance Heaters from 1 to 65 kW.
- Ultraviolet Lights.
- Mixing Boxes -- with dampers, modulating and three-position economizers.



IFL Rooftop Series
Horizontal

CABINET DESIGN

The heart of the IFL Rooftop is the standard plenum fan that allows the unit to generate up to 5.8 inches of total static pressure at up to 14,000 cfm in a horizontal cabinet configuration. Units are designed for applications in which outside air separation and treatment to control humidity, temperature and contaminants is desired. The fan assembly can be isolated from the rest of the unit and virtually eliminate transfer of any vibration to the building. As an added benefit, the IFL Series unit complies with all sections of ASHRAE 62.1 as a prerequisite for LEED Certification.

FEATURES

- 3 cabinet sizes.
- Nominal maximum cooling capacities of 20, 40, and 60 tons of 95/77 degree air.
- Air delivery ranges from 1,500 cfm to 14,000 cfm.
- Gas heating options range from 160,000 btuh output to 480,000 btuh output.
- Cabinet heights range from a low 36 inches to 60 inches.
- DDC control system, which manages all of the unit functions, including control of the optional VFD, with digital precision and reliability.

OPTIONS

- Several control schemes and the advanced control panel can even be accessed and operated via the internet.
- Motorized inlet air shut-off damper with blade and jamb seals.
- Flat Bank filter section with nominal 2" thick (filter racks only) (throwaway) (pleated) (cleanable) filters or nominal 2" thick pleated filters with (4" deep 65% efficient filters) (4" deep 95% efficient filters) (12" deep 95% efficient filters).
- Cooling coil section complete with Flat Bank filter section with nominal 2" thick pleated filters. (Chilled Water) (DX) coil(s) with copper tubes, aluminum fins and galvanized steel casing.
- Inlet hood and birdscreen.
- Mixed air section with O/A and R/A parallel blade dampers with blade and jamb seals. Direct drive actuators mounted inside casing and set for full modulation control.
- Perimeter roof curb. (12" high) (18" high).
- Internal insulation 1", 1-1/2 lb. density (filter section) (mixing section).
- Extended lube lines.
- Internal blower/motor isolation (open spring) (seismic spring).
- Double wall construction.
- Clogged filter switch with indication.
- Disconnect switch.
- Painted galvanized casing.
- High gas pressure regulator (shipped loose for inlet pressures over 1/2 PSIG).



APPLIED PRODUCTS GROUP

510 E. Memorial Rd., Suite C-4
Oklahoma City, OK 73114
405.286.4407 Fax: 405.286.4469

CORPORATE OFFICE

250 W. Laurel Street
Colton, CA 92324
909.825.0993 Fax: 909.824.8009



williamsapplied.com